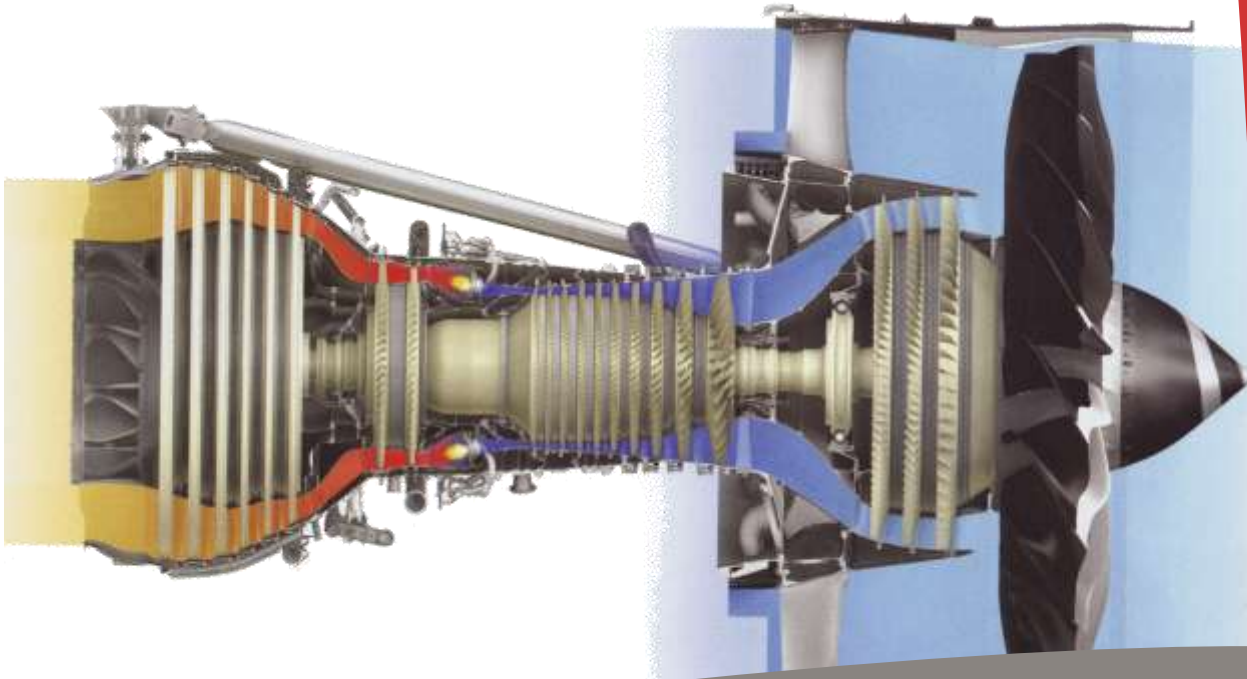




evs

www.evsgroup.aero

Engine Maintenance Management & consulting



Cost reduction through effective management

Workscope Planning
Table Inspection
Parts Sourcing
PMA/DER introduction
Invoice analysis
MRB reporting
.....



EVS at work for you

CONNECTING YOUR NEEDS TO.....

For aero engine owners and operators, a major percentage of operational cost is attributed to shop overhaul events. At EVS we apply a variety of tools to a shop visit to control costs and ensure the maximum value for every dollar spent. With the assurance that maintenance events are being measured against industry standards, and that contractual pricing and constraints are being enforced, our customers can focus on what makes them money ... flying passengers.

EVS CORE ENGINE SOLUTIONS

- CONTRACT NEGOTIATION.
- WORKSCOPE PLANNING.
- TABLE INSPECTIONS
- ESTIMATE CONTENTION
- BUILD STANDARD
- REPAIR ANALYSIS.
- ALTERNATIVE MATERIAL SUPPLY.
- SUPPLIER NEGOTIATION.
- INVOICE ANALYSIS.
- MRB PROCESS FOR SCRAP.
- WARRANTY ANALYSIS
- SERVICE BULLETIN REVIEW

SHOULDCOST AND VALUE ENGINEERING WHEN YOU NEED IT MOST

TABLE INSPECTION

The Table Inspection is an ideal opportunity to visually inspect and question repair methodologies and suggestions. The breadth of experience from our Engineers allows us to analyse and question all aspects of the repair. This inspection also allows EVS to note the condition of the engine and begin to research the marketplace for cost effective replacements. Our abilities at this stage include:

- Sourcing of high cost spares and benchmarking the MRO
- Challenging repair against replacement or scrap.
- Discussions on repairs under DER conditions.
- Specialist repairs outside the facility as sub-contract
- Initial cost estimates.

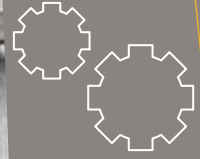
EXTERNAL SOURCING OF MATERIAL

With material costs typically comprising up to 80% of the total overhaul cost, tight control of costs is key to ensuring best value. By engaging the market place, EVS is able to widen the pool of available material and ensure the best value purchased material and sub-contracting options are selected. This information is also useful post repair, providing a benchmark for invoice analysis to ensure material and sub-contracting are realistically priced. Most contracts specify LLP replacement at 85% of CLP. EVS would challenge this from experience with major European MRO's (See case studies) as they may well purchase material at market value and charge at a higher rate which cannot be spotted without detailed analysis. The relationships EVS has with major component suppliers helps considerably as does their direct supply to the MRO facility in terms of reduced TAT.



.....THE TECHNOLOGY AND RESOURCES REQUIRED

EVS will work with the client throughout the process to make sure all the detail is covered and all their requirements are met. With a flexible suite of tools EVS has the unique ability to provide a customised solution that fits your needs. From a single invoice review to a comprehensive engine fleet overhaul program including vendor selection, initial contract negotiations, full management of the shop visit itself, and review of scrapped and surplus materials post repair, EVS has the experience to manage your engine requirements.



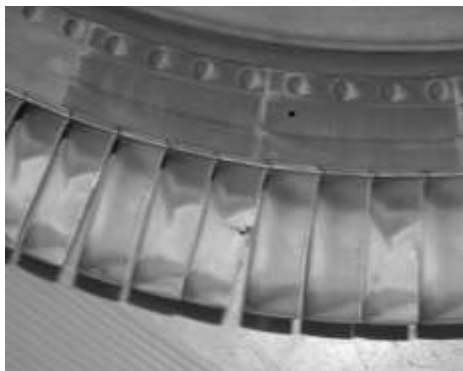
EVS CONSULTING PROVIDES A TOTAL END TO END SOLUTION.

MRB ANALYSIS & WARRANTY

Very few owners actually review the material removed from their parts. In fact some don't know this facility is available. It is an ideal opportunity for an experienced team to understand what was scrapped and why. It has been seen and again proven that one companies scrap is possibly another companies feedstock. Independent companies are always looking for repairable material and if suitable then the scrap material has value.

Various examples of MRB savings

- New material used when surplus would have been acceptable. **saving \$160,000**
- Fuel Pump scrapped with numerous DER's available **saving \$157,000.**
- Accessories scrapped when alternative repair vendors have multiple repair schemes available to recover **saving \$18,000**
- Cylinder scrapped when a DER was readily available. **saving \$5,000**



Through a combination of MRB scrap reviews and analysing accomplished SB's against our extensive database of warranty eligibility, EVS is able to quickly identify the scope of warranty applicability, and support claims with the OEM. The warrantable values of high cost components can quickly add up to a considerable saving. Repair facilities do not always class themselves as responsible for their clients warranty and this needs careful attention when agreeing contracts

- (GE engine) HPT Disk scrapped when warranty was applicable. **saving \$185,000**
- (IAE engine) HPT Air Seals scrapped with remaining cycles **saving \$194,800**
- (CFM engine) LPT stage 4 warranty concession **saving \$26,000**



As well as Engine Management EVS offers a further range of products designed to reduce or control operating costs.

These are:



Damage & Insurance

EVS have developed an innovative and comprehensive solution for operators to record damage to their assets. As well as complying fully with the expected Mandatory reporting from EASA, this also allows progression of insurance claims and monitoring and reporting of 3rd party damage.



Warranty Management

Warranty' represents an assurance that an item will last a certain amount of time, and that if this promise or condition is not met, the user will receive appropriate compensation. EVS have an online system, operational either as a stand alone or integrated with a clients existing information systems to flag any warranty opportunities proactively, and manage the resultant claims through to resolution



Check Management

Along with Engine Maintenance Management, EVS have developed and applied Shouldcost analysis to the routine and non-routine processes of Check Management, in order to manage and reduce cost and add value for airlines and operators.



Component Management

EVS provides an integrated portfolio of cost reduction and cost avoidance opportunities for airlines and operators on Components. EVS has an unrivalled package of services for parts and repairs - from sourcing, through purchasing, delivery, repair management and value analysis to full service sourcing of hard-to find parts and components for VIP's



Material Recovery Solutions

MRS provides owners an independent analysis of a component, and recovery of critical and valuable piece parts from the unit prior to scrap and disposal. Serviceable parts are then stored to be used on future units or sold on the market, adding real value to the operator for items they previously just threw away.



evs

E. Warner Road

Victoria Close

Tempe Arizona 85284

Leeds LS25 6NR UK

+1 480 381 3038 ph

+44 1977 680112 ph

+1 412 202 8167 fax

+44 1977 680113 fax